

RIGOL

Ultra Sigma Screenshot Function Supports Newly Added Models

When **RIGOL** released new models or product series, you may encounter a problem: The convenient screenshot function of the Ultra Sigma software is not available for the newly released products. The PC software such as Ultra Sigma generally has a fixed maintenance period, and after the software version runs stable, the maintenance period for the version update lasts longer. Therefore, for the convenience of users, new models are supported by the screenshot function of **RIGOL**'s Ultra Sigma. The detailed steps are as follows:

1. Download the latest version of Ultra Sigma installation package from **RIGOL** official website (www.rigol.com). Then, install the software properly according to the installation wizard. If you have installed the software, ignore this step.

2. Download the screenshot command files (*.pscmd) that you require from **RIGOL** official website.

Note: When new product models or series are released, **RIGOL** will release the relevant screenshot command files synchronously on its official website, such as "RSA5000&RSA3000.pcsmd" for the RSA5000/RSA3000 series real-time spectrum analyzer.

3. Start up Ultra Sigma to enter its main interface, as shown in Figure 1.

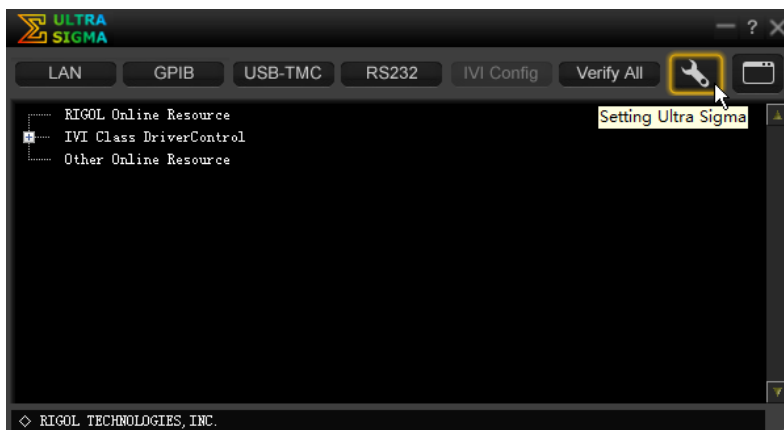


Figure 1 Main Interface of Ultra Sigma


4. Click the icon  to enter the setting interface of Ultra Sigma, as shown in Figure 2.



Figure 2 Setting Interface of Ultra Sigma

5. Click **Instrument Print Screen** to enter the interface as shown in Figure 3.

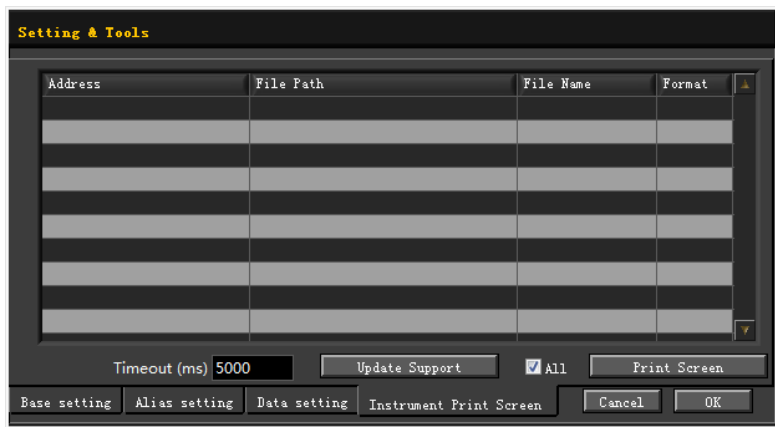


Figure 3 Model Update Support Interface

6. Click **Update Support**, and then the file selection window "Select Print Screen CMD file" is displayed, as shown in Figure 4. Then, select the desired downloaded screenshot command file (*.pscmd). Click **OK** to update the screenshot command.

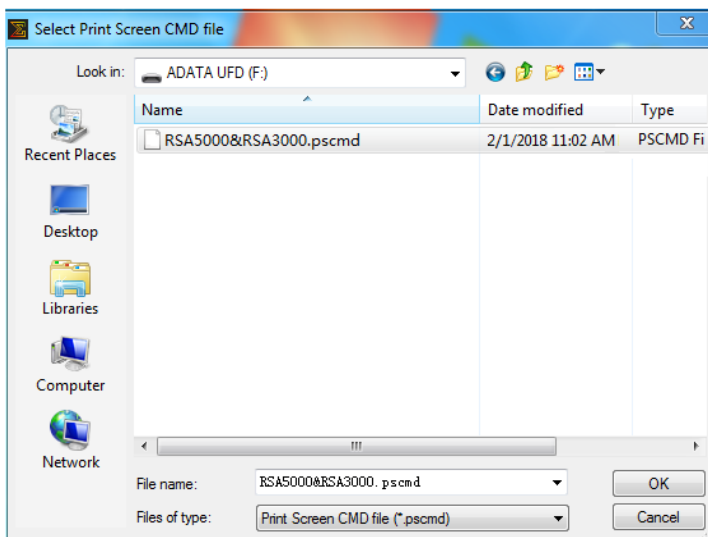


Figure 4 File Selection Window

7. If the screenshot command is updated successfully, then a prompt message as shown in Figure 5 is displayed. Click to complete the update.

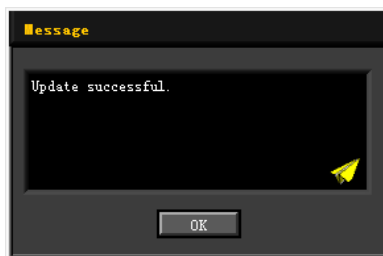


Figure 5 Prompt Message for Update Success

If the screenshot command file type error occurs, (e.g. if it is not a *.pscmd file), then a prompt message as shown in Figure 6 is displayed. Click . Then, download a right screenshot command file from **RIGOL** official website or select a proper screenshot command file type to update.

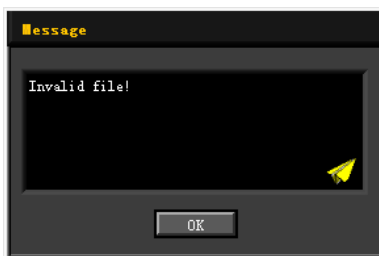


Figure 6 Prompt Message for Invalid File

If the screenshot command file data error occurs, then a prompt message as shown in Figure 7 is displayed. Click . Then, download a right screenshot command file from **RIGOL** official website for update.

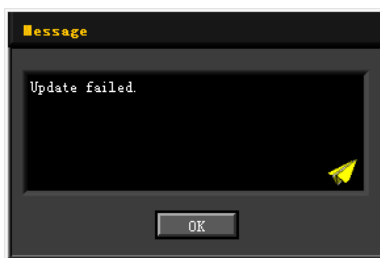


Figure 7 Prompt Message for Update Failure

RIGOL Ultra Sigma 截屏功能添加新型号

当 **RIGOL** 发布新的产品型号或产品系列时，用户通常会遇到一个问题：Ultra Sigma 软件无法对新发布的产品使用便捷的截屏功能。由于像 Ultra Sigma 之类的 PC 软件一般都有固定的维护周期，而且当软件版本趋于稳定后，版本更新的周期也随之更长，所以为了方便用户，**RIGOL** 支持给 Ultra Sigma 的截屏功能添加新型号。具体操作步骤如下：

1. 登录 **RIGOL** 官网（www.rigol.com）下载 Ultra Sigma 软件安装包，并根据向导正确安装软件。如已安装 Ultra Sigma 软件，请忽略此步骤。

2. 登录 **RIGOL** 官网下载您所需的截屏命令文件（*.pscmd）。

注：发布新的产品型号或产品系列时，会在 **RIGOL** 官网上同步发布相关的截屏命令文件，如 RSA5000/RSA3000 系列实时频谱分析仪发布的截屏命令文件为 RSA5000&RSA3000.pcsmd。

3. 启动 Ultra Sigma 软件，进入软件主界面，如图 1 所示。

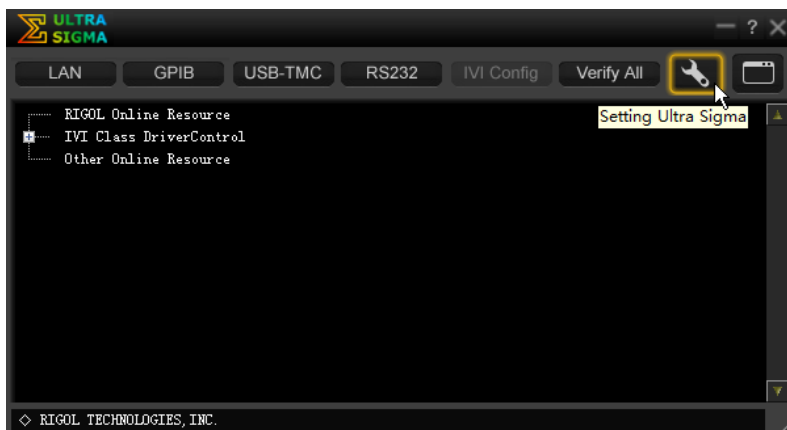


图 1 Ultra Sigma 主界面

4. 点击界面上方图标 ，进入 Ultra Sigma 设置界面，如图 2 所示。



图 2 Ultra Sigma 设置界面

5. 点击 **Instrument Print Screen**，进入图 3 所示的界面。

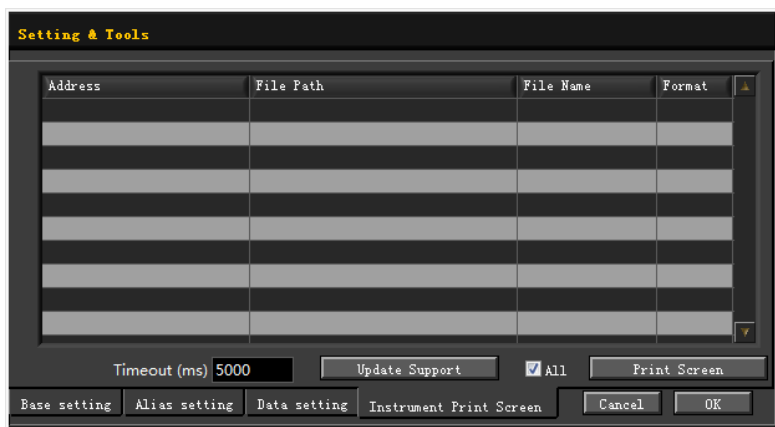


图 3 更新型号支持界面

6. 点击 **Update Support**，弹出“Select Print Screen CMD file”文件选择框，如图 4 所示，然后选择已下载的截屏命令文件 (*.pscmd)，点击“确定”即可进行截屏命令更新。

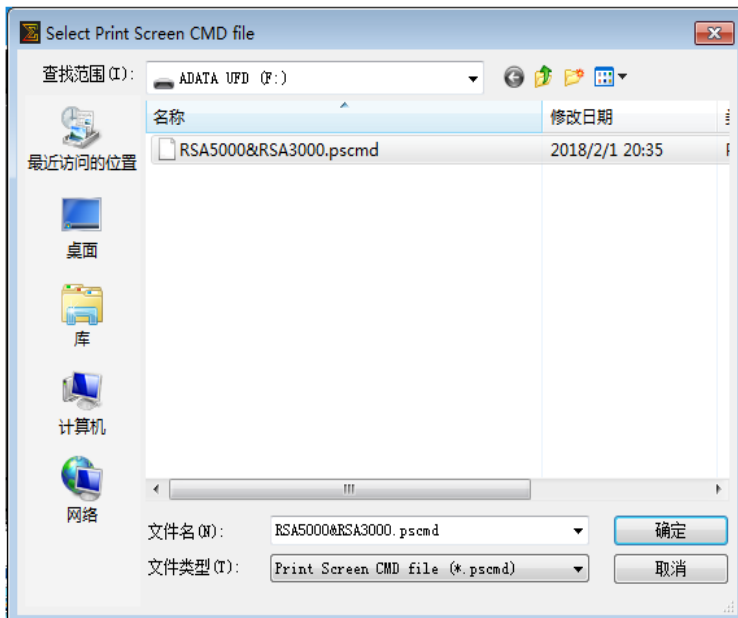
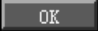


图 4 文件选择框

7. 若截屏命令更新成功，则弹出图 5 所示的提示框，点击 ，完成截屏命令更新。

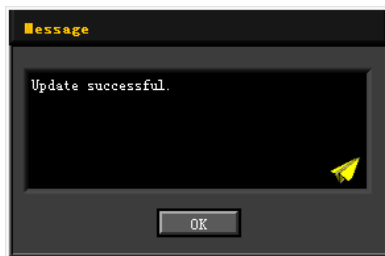



图 5 更新成功提示框

若截屏命令文件类型错误（不是*.pscmd 文件），则弹出图 6 所示的提示框，点击 ，请在 **RIGOL** 官网重新下载正确的截屏命令文件或重新选择正确的截屏命令文件类型进行更新。

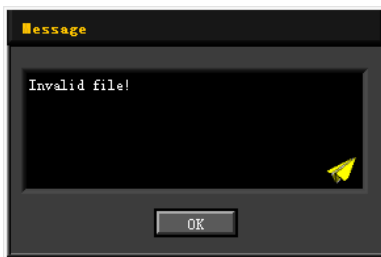



图 6 无效文件提示框

若截屏命令文件数据错误，则弹出图 7 所示的提示框，点击 ，请在 **RIGOL** 官网重新下载正确的截屏命令文件进行更新。

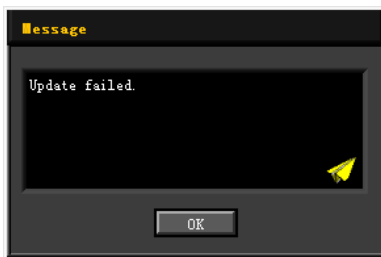


图 7 更新失败提示框